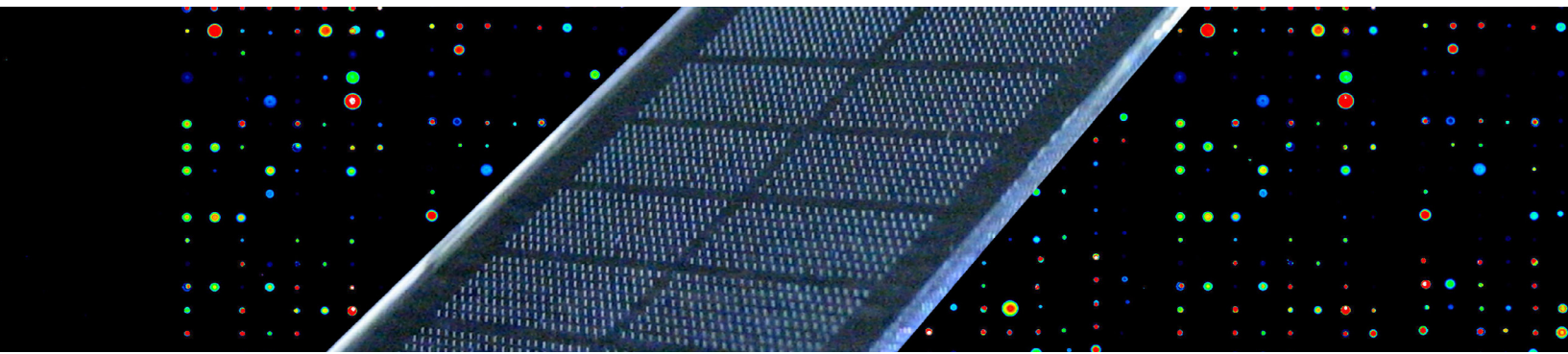
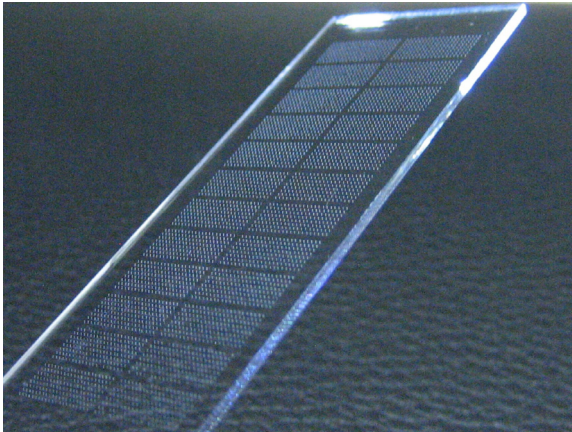


NEW MOLECULAR DIAGNOSTICS OF CANCER



PRODUCT



Glycan array is a plastic chip (1' x 3') where 600 ligands are displayed

Glycan microchip designed for molecular diagnostics of 4 cancers:

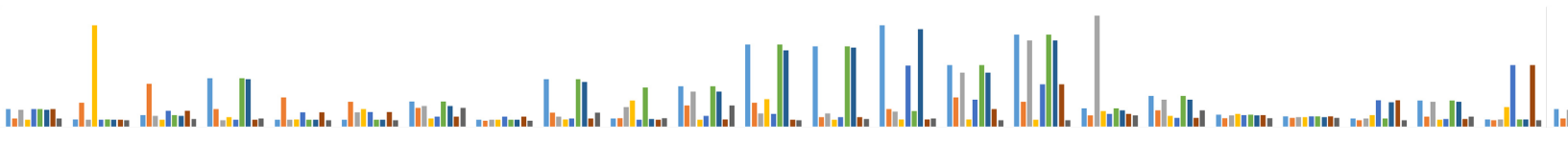
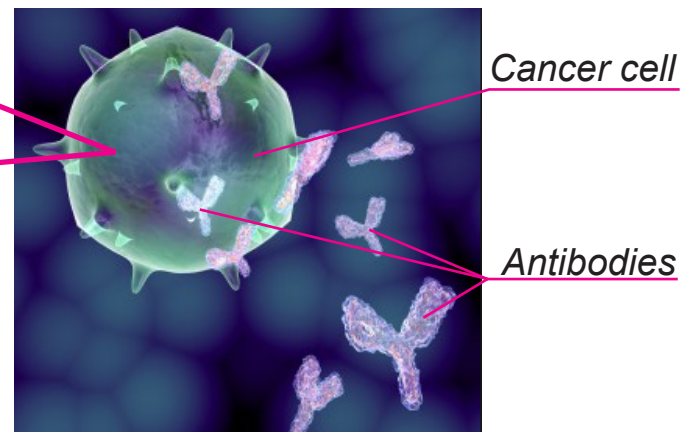
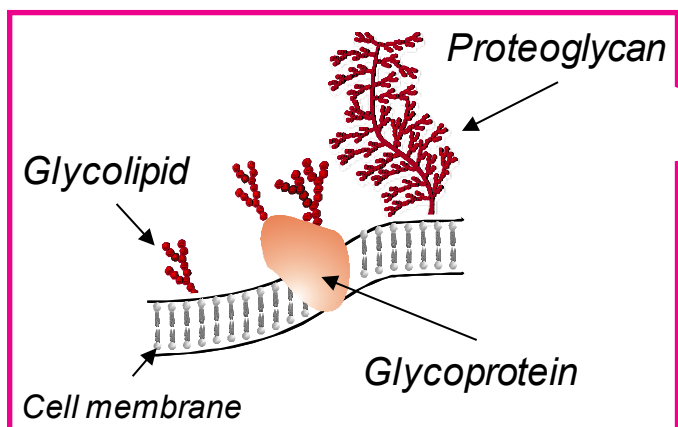
- breast,
- ovarian,
- colorectal,
- mesothelioma

The array consists of 600 ligands – mostly glycans and glycopeptides. Each ligand is represented at 6 replicates for better accuracy. Sensitive fluorescent detection.

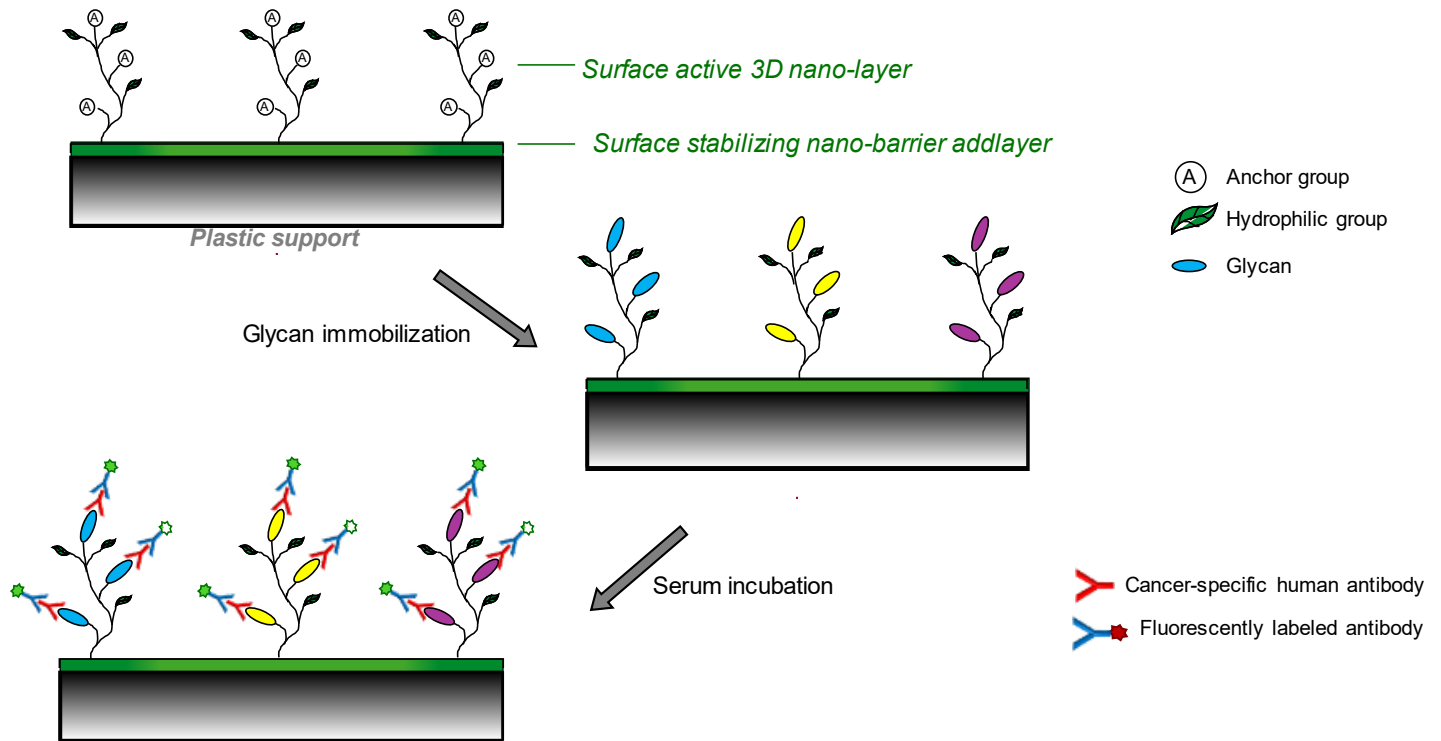
PRINCIPLE OF THE DIAGNOSTICS

Detection of diagnostic-valuable anti-glycan antibodies in serum/plasma

Diagnostic value - combinations of 8 - 10 antibodies-markers ("signatures"), specific for each disease



THE GLYCAN MICROCHIP



MICROCHIP BENEFITS

- High accuracy due to inclusion of several versions of the same ligand in composition of microchip.
- Multiplexity due to wide range of immobilized ligands;
- Low background and wide dynamic range due to fluorescent detection and newly developed friendly surface architecture;
- Detection of high affinity antibodies which known to have the best Dx value (whereas ELISA detects full range of Abs);
- Low cost enables mass-diagnostics.

CONTACTS



Plasmachem GmbH
Schwarzschildstr. 10,
12489 Berlin, Germany
Tel.: +49-30-63926313
contact@plasmachem.com
www.plasmachem.com

MOLECULAR DIAGNOSTICS
SEMIOTIK
semiotik-array.com/en/

Semiotik LLC,
Miklukho-Maklaya str., 16/10,
117437, Moscow, Russia
Tel. +7 (903) 537 75 31
info@semiotik-array.com
<http://semiotik-array.com/en/>

